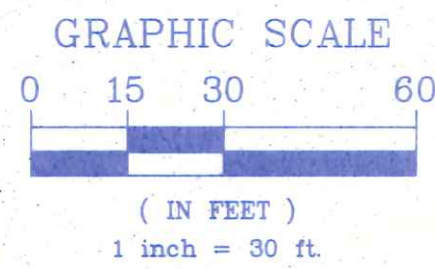
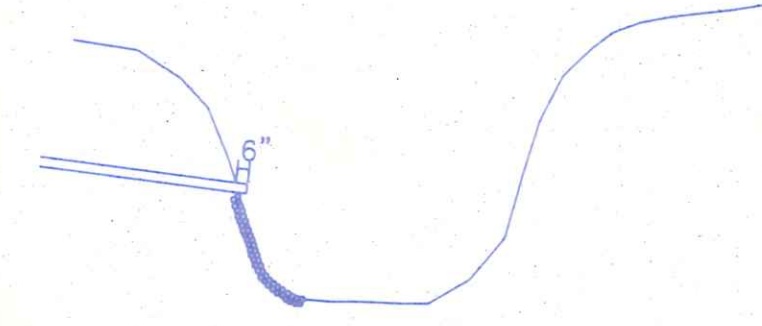


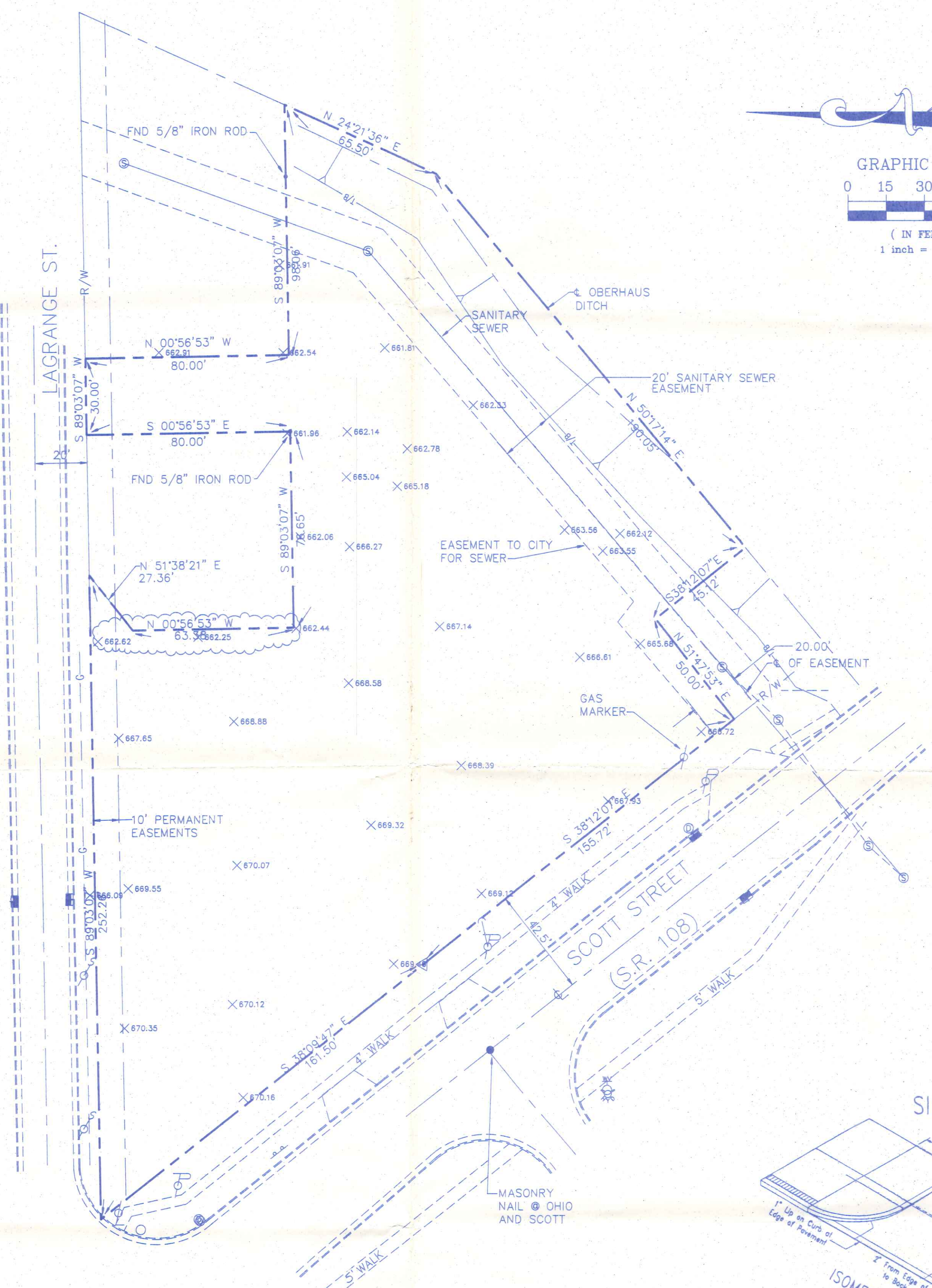
**BENCHMARK**  
 CROSS CUT ON S.E. END  
 POST OF BRIDGE. ELEV. 672.25



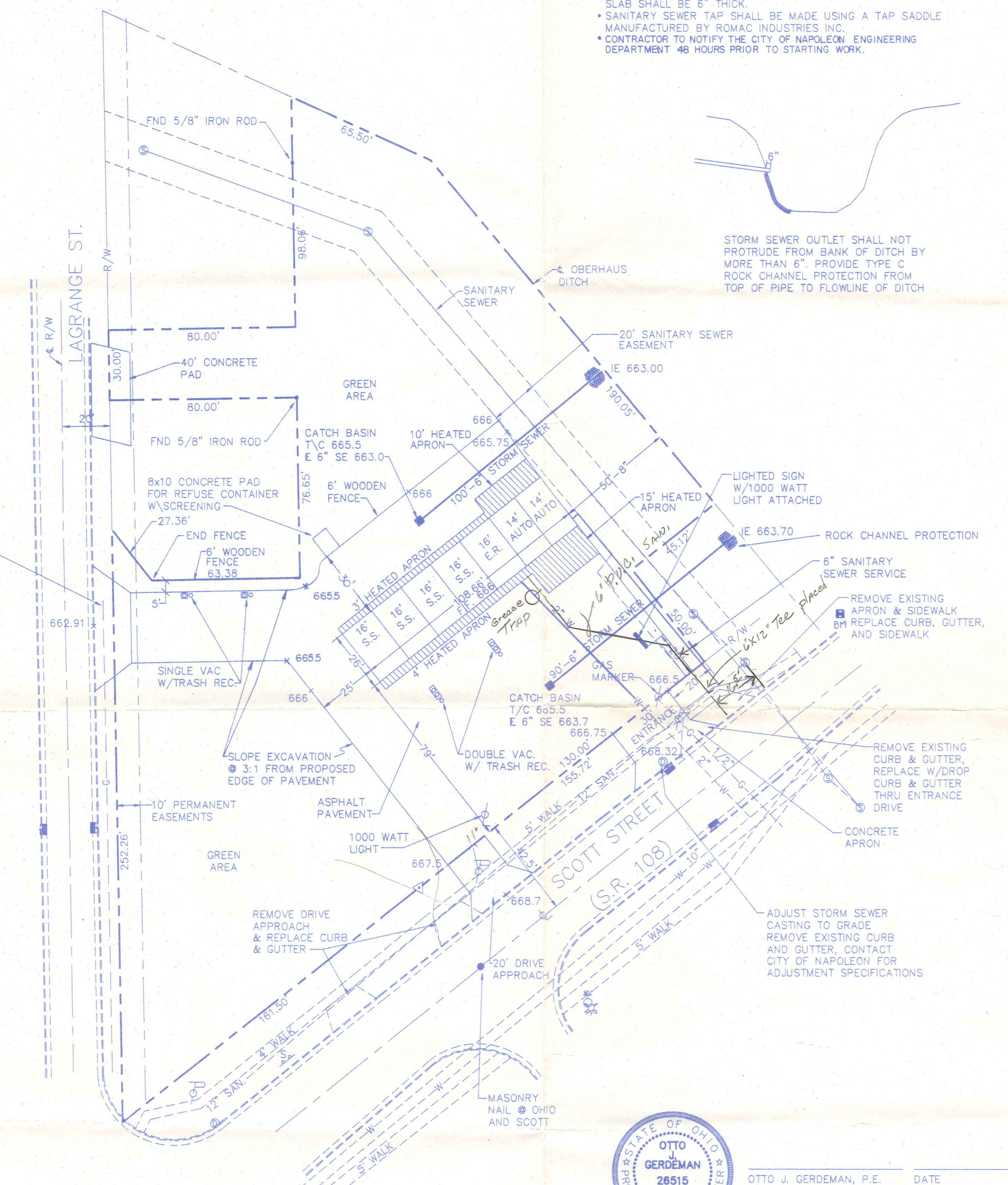
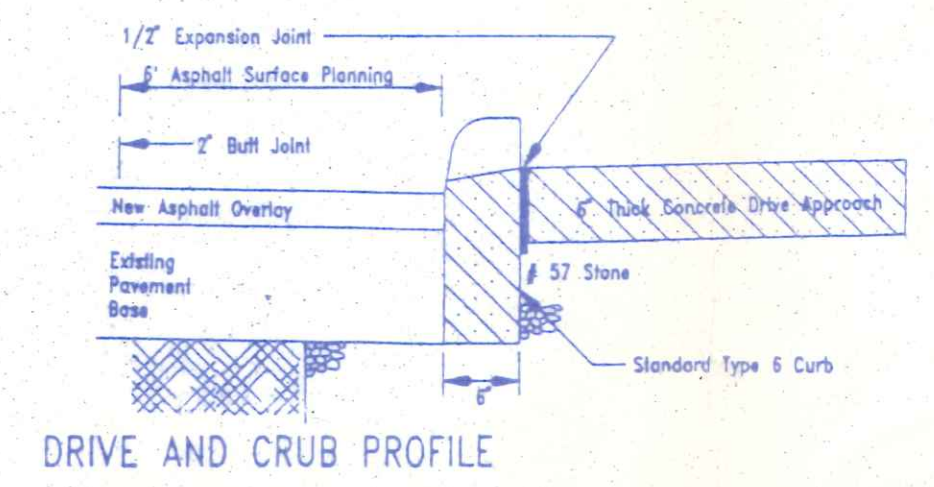
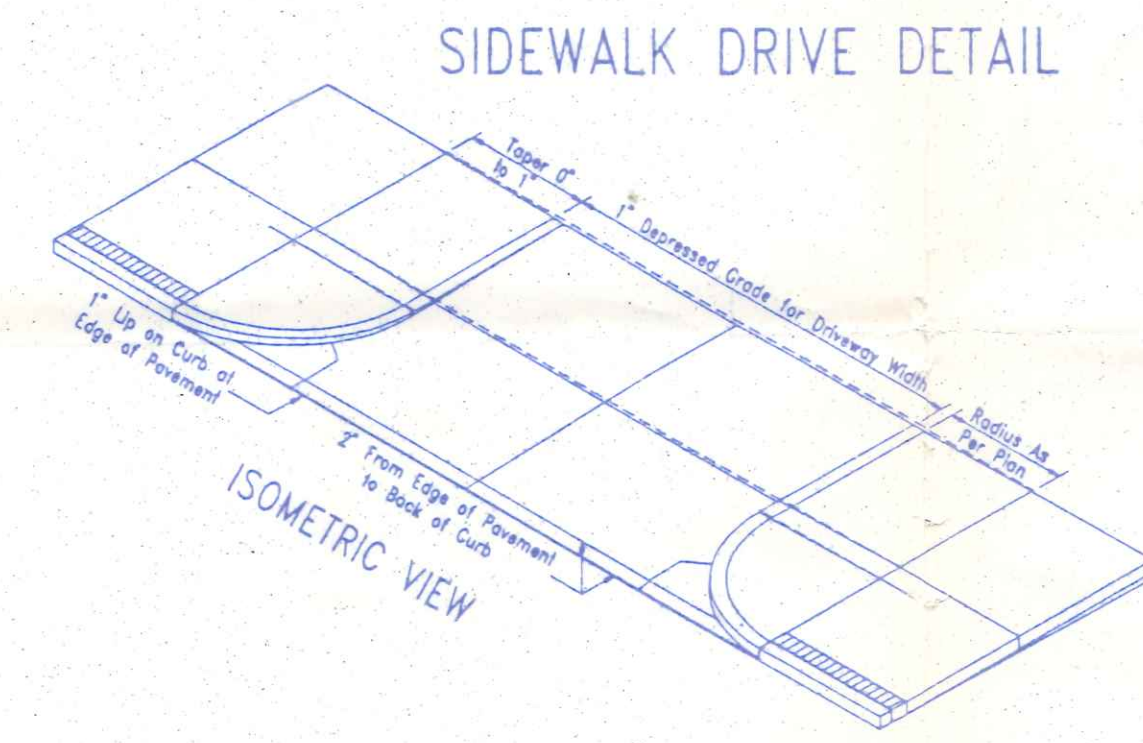
- NOTE:
- ALL STORM SEWER, SANITARY SEWER AND WATER SERVICE SHALL BE INSTALLED PER CITY OF NAPOLEON SPECIFICATIONS.
  - ALL APPROACH SLABS SHALL BE CONCRETE WITH A MINIMUM THICKNESS OF 6". THE SIDEWALKS 5' EACH SIDE OF APPROACH SLAB SHALL BE 6" THICK.
  - SANITARY SEWER TAP SHALL BE MADE USING A TAP SADDLE MANUFACTURED BY ROMAC INDUSTRIES INC.
  - CONTRACTOR TO NOTIFY THE CITY OF NAPOLEON ENGINEERING DEPARTMENT 48 HOURS PRIOR TO STARTING WORK.



STORM SEWER OUTLET SHALL NOT PROTRUDE FROM BANK OF DITCH BY MORE THAN 6". PROVIDE TYPE C ROCK CHANNEL PROTECTION FROM TOP OF PIPE TO FLOWLINE OF DITCH



**EXISTING SITE LAYOUT**



**PROPOSED SITE LAYOUT**



OTTO J. GERDEMAN, P.E. DATE



KENNETH A. MAAG, P.E. DATE

1074 SCOTT

ANY INFORMATION OR DATA ON THIS DRAWING IS NOT INTENDED TO BE SUITABLE FOR REUSE BY ANY PERSON, FIRM OR CORPORATION OR ANY OTHERS ON EXTENSIONS OF THIS PROJECT OR FOR ANY USE OR ON ANY OTHER PROJECT. ANY REUSE WITHOUT WRITTEN VERIFICATION AND ADAPTATION BY THE ENGINEER, ARCHITECT OR SURVEYOR FOR THE SPECIFIC PURPOSE INTENDED WILL BE AT THE USERS SOLE RISK AND WITHOUT LIABILITY OR LEGAL EXPOSURE TO THE ENGINEER, ARCHITECT OR SURVEYOR.

**EXISTING AND PROPOSED SITE PLAN**



**POGEMEYER DESIGN GROUP, INC.**  
 ARCHITECTS ENGINEERS PLANNERS  
 417 WAYNE AVENUE P.O. BOX 7040  
 DEFIANCE, OHIO 43512

**SUPERWASH**  
 NAPOLEON, OHIO

DATE	
CHECKED BY	KAM
DRAWN BY	BDH
REVISION	

1 / 1  
 JOB NUMBER  
 7119-003

Super Wash